

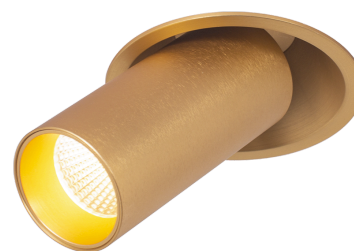
Fuoco Move Out CNC, Brushed Gold, 3000K, Phase cut

Product Coded
FMO-G103D

<https://purati.com/product/fuocomoveoutcnc/>

DESCRIPTION

The Fuoco Move Out Downlight offers both accent and general lighting with 355° rotation and 45° tilt. Designed to provide a high level of visual comfort with an outstanding colour performance CRI>97, they can be used for home and presentations, in retail situations, or in museums.



QUICKINFO

GENERAL

Finish	Brushed Gold
Material	Powder Coated Aluminium
IP	20
Lifespan	L90/50,000h
Warranty	5 years

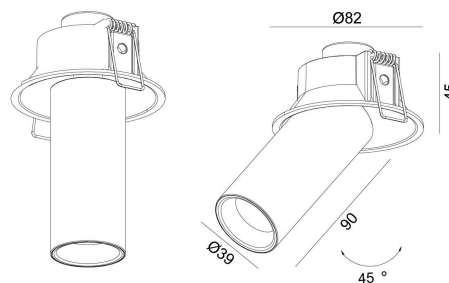
LED

Lumen	600lm
CCT	3000K
CRI	>97
SDCM	<2
UGR	<19
Beam angles	15°/24°/36°/60°

ELECTRICAL

Voltage	220-240V
Power	10W
Driver (Built-in)	Phase cut

CRI >97	SDCM <2	IP20	 5 years
------------	------------	------	--



Ø75mm 5-25mm

PURATI PTY LTD

Unit 10, 80 O'Riordan St, Alexandria NSW 2015

Tel: +61 2 8065 8181 sales@purati.com